

With 80% of guests hailing from overseas,
Park Hotel Tokyo offers foreign guests hospitality with a Japanese aesthetic

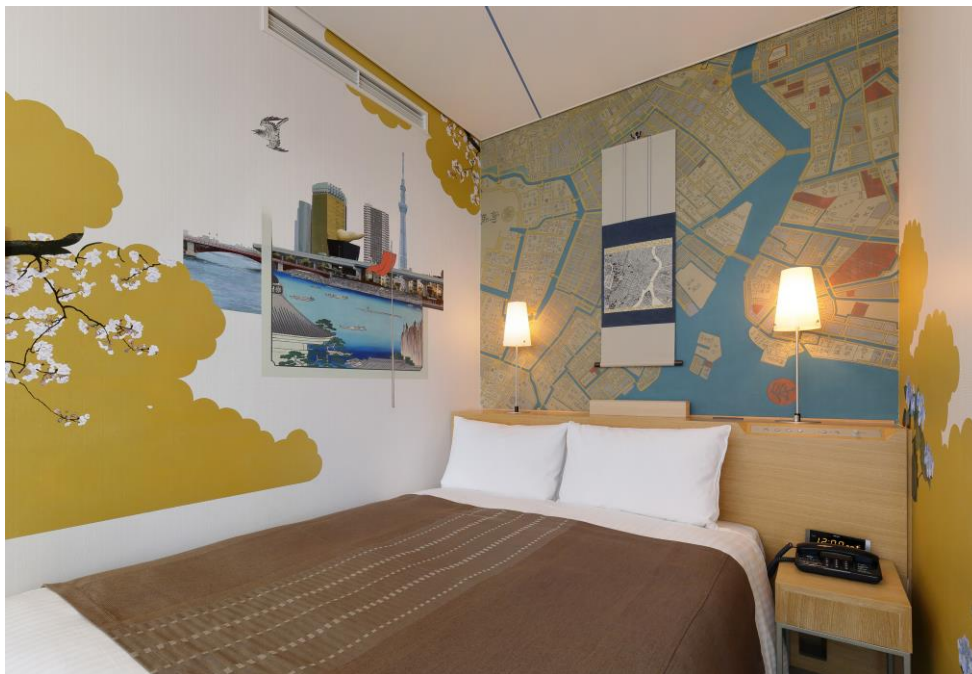
The “Artist Room Edo-Tokyo” is now completed

The Park Hotel Tokyo (Tokyo, Japan), in December 2012, started the “Artist in Hotel” project where an artist decorates an entire guestroom. The project is still in progress. By 2016, all the guestrooms on the 31st floor will be so decorated, and the “Artist Room Edo-Tokyo”, the 19th in the series, has now been completed.

The artist Mr. Hidetaka Furukawa started painting the 19th Artist Room based on the theme: “Edo-Tokyo”, on January 8, 2016, continued the work for about two and a half month while staying at the hotel, and completed it on March 29, 2016.

“I’d be delighted if guests who stay in this room have an opportunity to discover even a little bit about the history of Tokyo that lies behind its modern veneer”, said Mr. Furukawa. In the foregrounds of the paintings of Tokyo’s landmarks today, Tokyo Skytree, Tokyo Tower, and Nihombashi, scenes from ukiyo-e are used. From the pictures of famous places by *Hiroshige* from Edo period, Mr. Furukawa had chosen ones of the same places viewed from the same angle. Seasonal flowers such as cherry blossoms, hydrangea, morning glories, chrysanthemum and camellia are also painted to symbolize that these flowers never change, even with a time difference of over 160 years.

In Artist Room Edo-Tokyo, please enjoy taking a leisurely time trip across one and a half centuries, while looking at the overlapping landscapes of Edo and Tokyo.



Artist Room Edo-Tokyo

[Artist Room Edo-Tokyo Outline]

Opening : April 11, 2016 (online and phone reservations accepted)

Room : Artist Room Single (single occupancy), 19square meters, Bed size : 1,400 × 1,950 mm

Rate : 35,000 yen per night (including taxes and service charge)

Reservation and other question : +81 (0)3-6252-1100

<http://www.parkhoteltokyo.com/artcolours/en/aih.html>

[Cooperation] Shinobazu Gallery, AIN SOPH DISPATCH

[Producer] creative unit moon



[Profile of Hidetaka Furukawa]

Hidetaka Furukawa always expresses himself using a wide variety of materials - implements, diaries, biology and music, without sticking to any particular style. In recent years, he has expanded a series named "CULTIVATE" which portrays land as the subject. Discovering the identity of the region from historical documents and fieldwork, and shining a spotlight on forgotten people and events, the series has become one of the pillars of his activity. He has handled many conceptual three-dimensional works, but is also noted for works in two dimensions which freely manipulate Japanese and Western styles.

[Artist Rooms in Progress]

As of April 11, 2016: 20 Artist Rooms are completed, and 2 rooms are in progress:

- Artist Room on the theme of "Castle" by Kazuki Mizuguchi
- Artist Room on the theme of "Wabi Sabi" by Conami Hara

※Coverage of the Artist Rooms on creation are available on request.

[About Park Hotel Tokyo]

Due to its ideal location, and spectacular view of "Tokyo Tower" and "Mt. Fuji", the Park Hotel Tokyo has a high proportion of foreign guests, with that figure surpassing 78% in 2015. In order to enable foreign guests to enjoy Japanese aesthetics distinctive of the Park Hotel Tokyo, we are creating spaces throughout the hotel that take art into consideration, and especially among them, the Artist Rooms have earned a highly favorable reception for the works painted directly onto the guest room walls as though they were a canvas.

< Contact Details >

Park Hotel Tokyo, PR, Emi Sotome (Ms), Yuko Matsubara (Ms)

Email : sotome@shibaparkhotel.com

Shiodome Media Tower 1-7-1 Higashi Shimbashi, Minato-ku 105-7227, Tokyo

TEL: +81(0)3-6252-1111(Hotel) FAX : +81(0)3-6252-1001